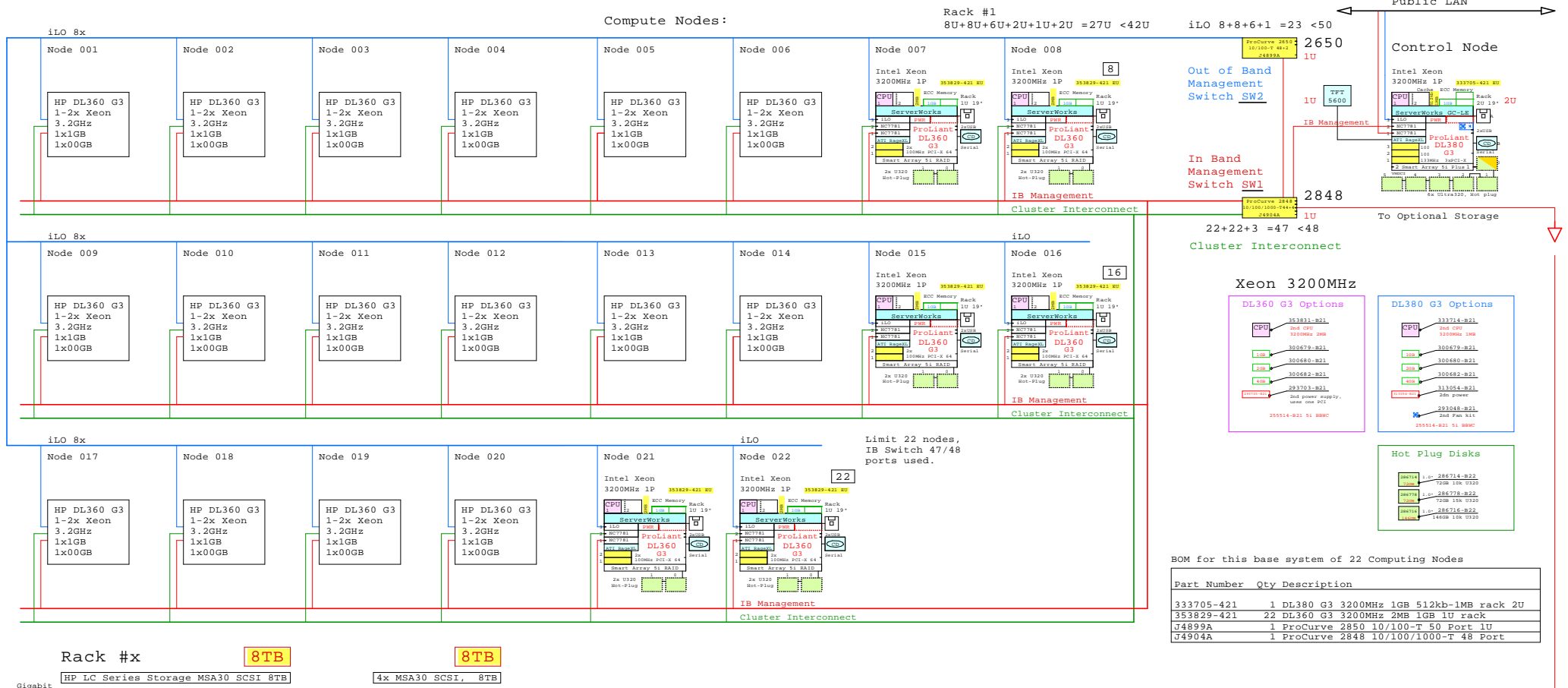
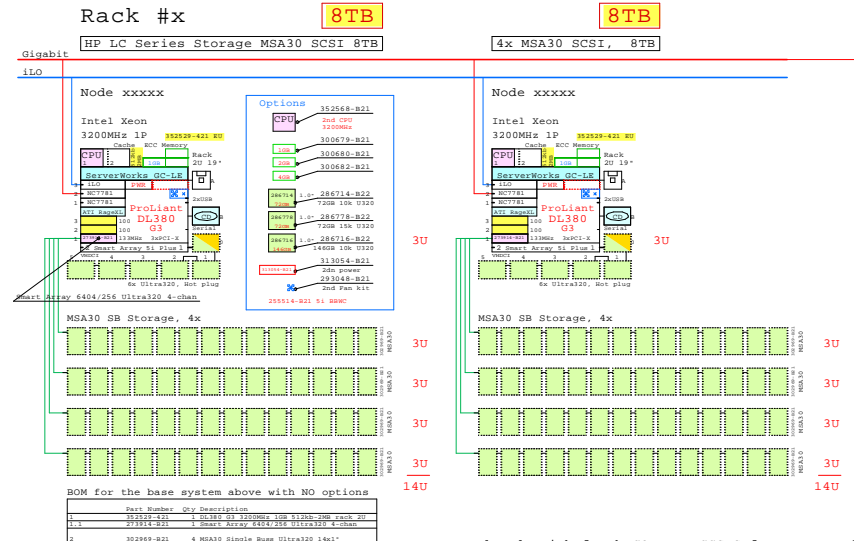


HP LC 2000 Series Cluster, GigaEthernet 16 to 22 Nodes, Xeon DL360 G3, One Rack



BOM for this base system of 22 Computing Nodes

Part Number	Qty	Description
333705-421	1	DL380 G3 3200MHz 1GB 512kb-1MB rack 2U
353829-421	22	DL360 G3 3200MHz 2MB 1GB 1U rack
J4899A	1	ProCurve 2850 10/100-T 50 Port 1U
J4904A	1	ProCurve 2848 10/100/1000-T 48 Port



Dear LC-Series Golden Eggs reader

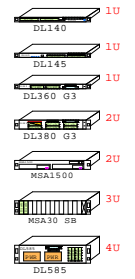
This template is designed for 16x DL360 G3 Xeon computation nodes. It can be expanded up to 22 nodes in the original rack. The 22 node limit comes from the IB switch 48 ports, all used.

This template is the "raw base system". Options are serviced separately on this template. When you need a customized diagram from this template, please e-mail to me your "wish list", how to modify the template. I will return to you Your customized system diagram on best effort bases. Format of the diagram file will be PDF.

Larger systems and more processors types are available. Computation nodes are Intel Xeon and AMD64 Opteron. HP ProLiant nodes are, DL140, DL360 G3/G4 and DL145.

I am highly interested to hear your planning experiences with this visual system configuration tool.

I wish you good planning sessions. Matti.Patari@Kolumbus.FI



Date: 28-Oct-2004

If this diagram has influenced on your purchase decision, please let me know. Matti.Patari@Kolumbus.FI GE-Architect.

GOLDEN EGGS	31-Jan-2005	LC2000GigE16
Visuals		Matti.Patari@Kolumbus.FI