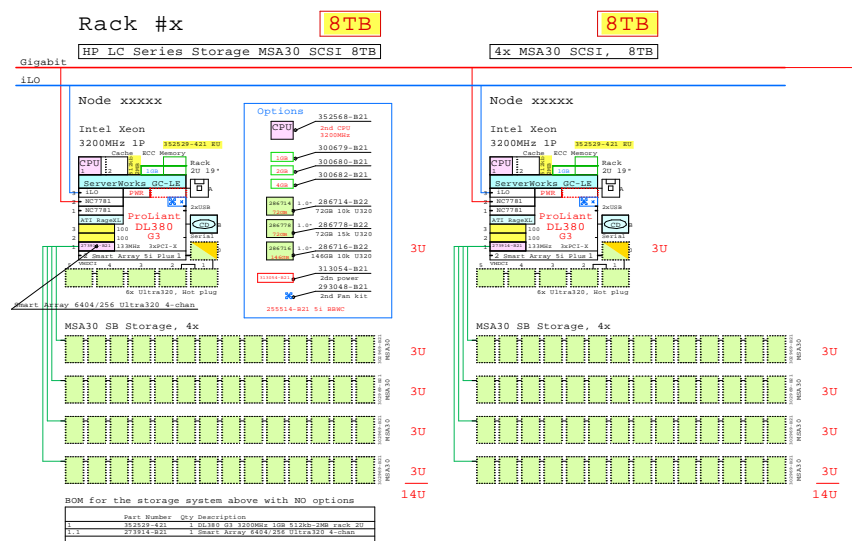
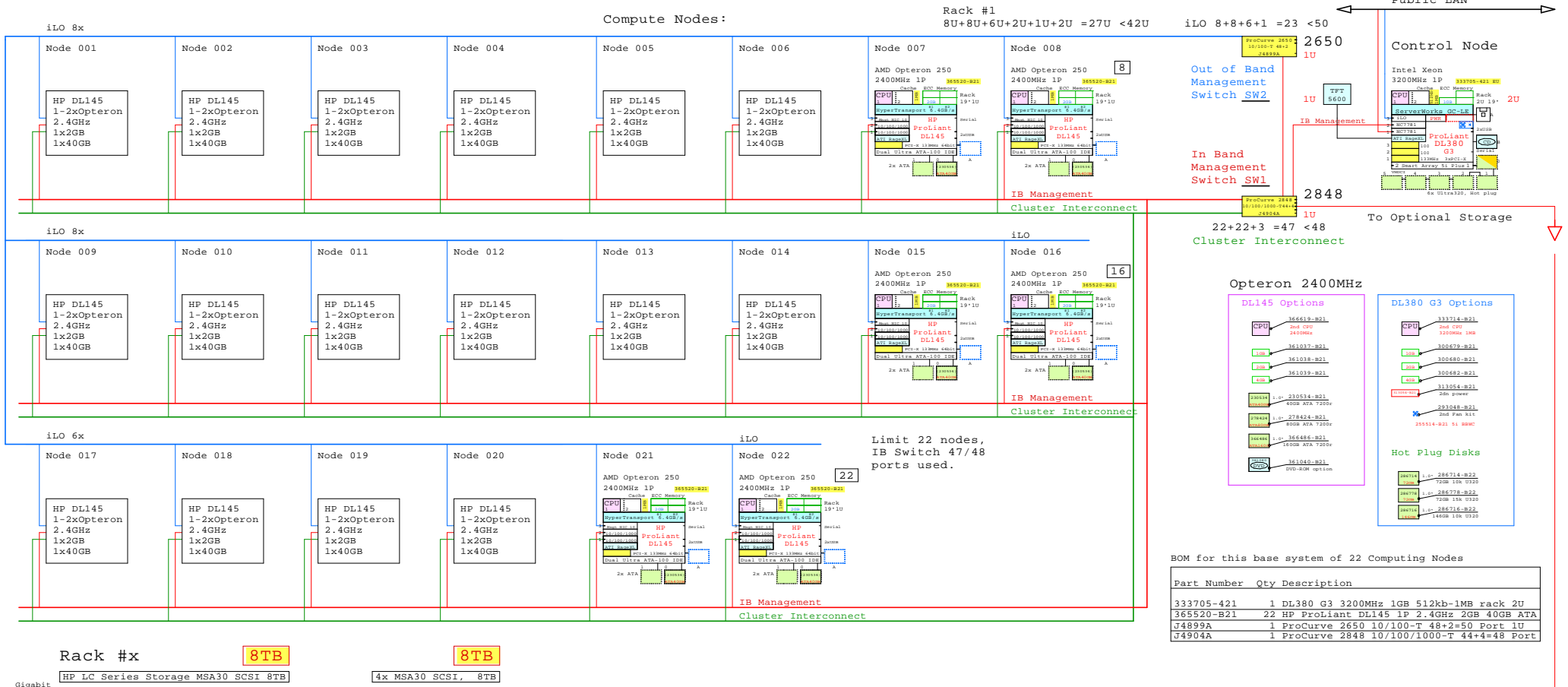


HP LC 3000 Series Cluster, GigaEthernet 16 to 22 Nodes, Opteron DL145, One Rack



Dear LC-Series Golden Eggs reader

This template is designed for 16x DL145 AMD64 Opteron computation nodes. It can be expanded up to 22 nodes in the original rack. The 22 node limit comes from the IB switch 47 ports used from 48 total.

This template is the "raw base system". Options are serviced separately on this template. When you need a customized diagram from this template, please e-mail me your "wish list", how to modify the template. I will return to you Your customized system diagram on best effort bases. Format of the diagram file will be PDF.

Larger systems and more processors types are available. Computation nodes are Intel Xeon and AMD64 Opteron. HP ProLiant nodes are, DL140, DL360 G3/G4 and DL145.

I am highly interested to hear your planning experiences with this visual system configuration tool.

I wish you good planning sessions. Matti.Patari@Kolumbus.FI

Date:28-Oct-2004

If this diagram has influenced on your purchase decision, please let me know. Matti.Patari@Kolumbus.FI GE-Architect.

If you need a customized PDF diagram from this template, please let me know. Send your "wish list" to: Matti.Patari@Kolumbus.FI

GOLDEN EGGS 11-Jan-2005 Lc3000gigE16
 Vj Vuolle Matti.Patari@Kolumbus.FI

HP LC3000 Series GigaEther 16-22 Golden Eggs Visuals, Helsinki